



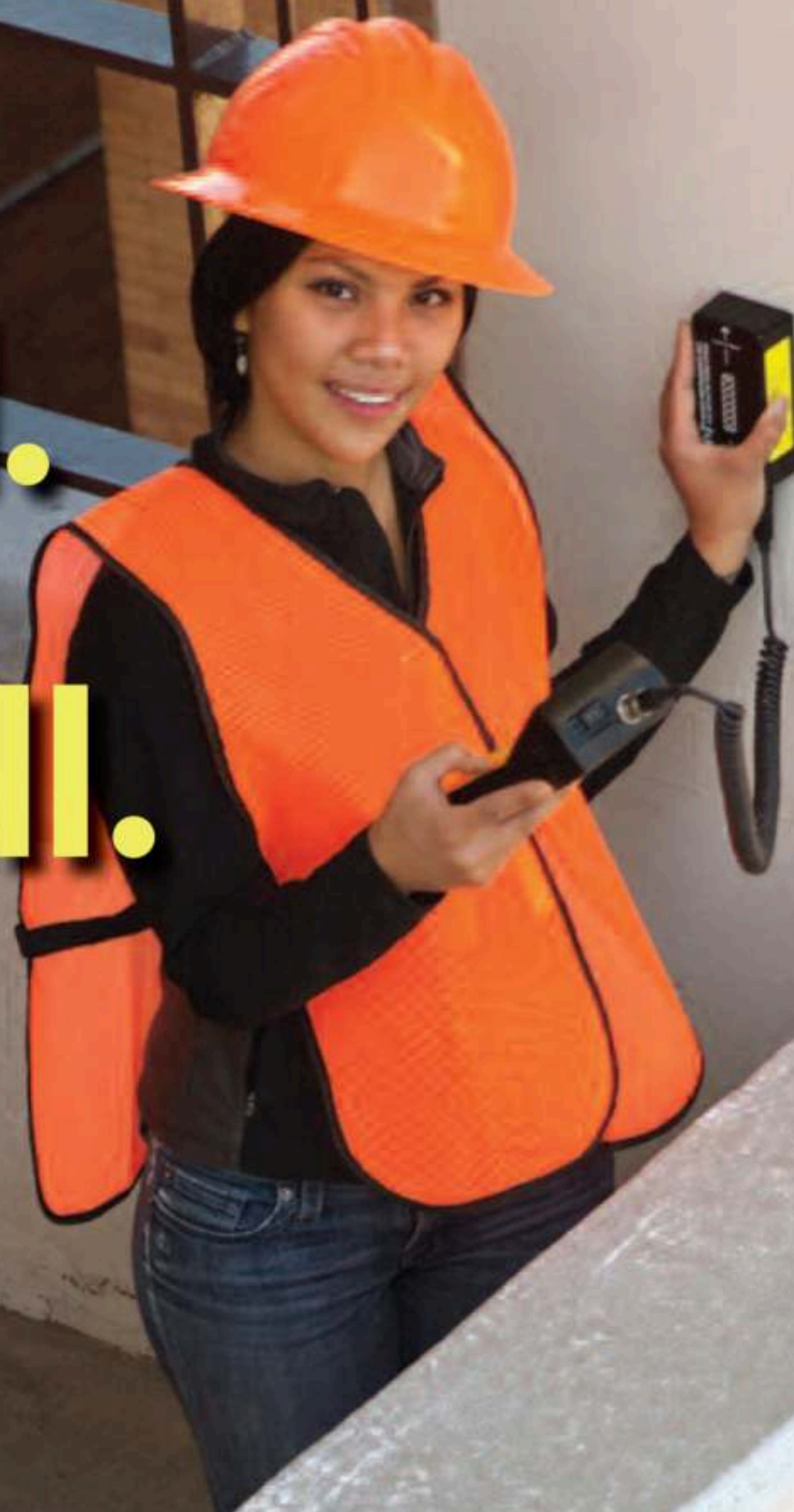
# **NDT**

## **JAMES INSTRUMENTS**

Non Destructive Test Equipment

FOR CONSTRUCTION MATERIALS

**Test Well.**  
**Build Well.**



STRENGTH  
LOCATORS  
ULTRASONICS  
CORROSION  
MOISTURE



# STRENGTH TESTING



## Windsor® Probe Test System

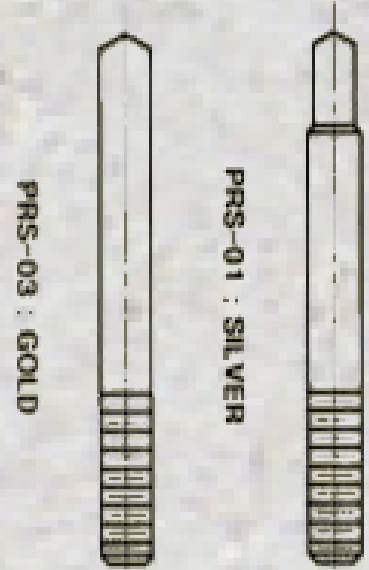
Most Advanced System for Compressive Strength Testing of Standard and High Performance Concrete

**Z-WP-1000** - Windsor® Probe Test System (system does not include probes)

**Z-WP-534** - Windsor® Probe Manual System (system does not include probes)

**U-PRS-01** - 75 Silver Probes & 75 Power Loads for Testing Standard Density Concrete.

**U-PRS-03** - 75 Gold Probes & 75 Power Loads for Testing Lightweight Concrete

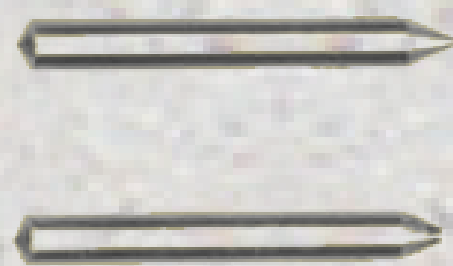


## Windsor® Pin Test System

For Strength Testing of Concrete, Brick and Mortar Features Special Chuck for Mortar Joints.

**W-P-2000** - Complete Windsor® Pin System (system does not include pins)

**W-P-1040** - Case of 40 Hardened Steel Pins for Windsor® Pin Test System



## Rebound Hammers

Strength Testing for Concrete, manual and digital versions available, low impact and high impact strength available. Digital Hammers include Reboundlinx software for data transfer.

**W-D-2000/W-D-2005** - Complete Digital Rebound Hammer.

**W-D-1500/W-D-1505** - Basic Digital Rebound Hammer.

**W-M-250/W-M-255** - Standard Impact Manual Rebound Hammer

**W-C-7312** - Test Anvil to Calibrate Rebound Hammers



## James Bond Test™ MK IV

For Testing Tensile Strength of Overlays, and Overlayments

**P-C-7400** - James Bond Test™ MK IV Complete System

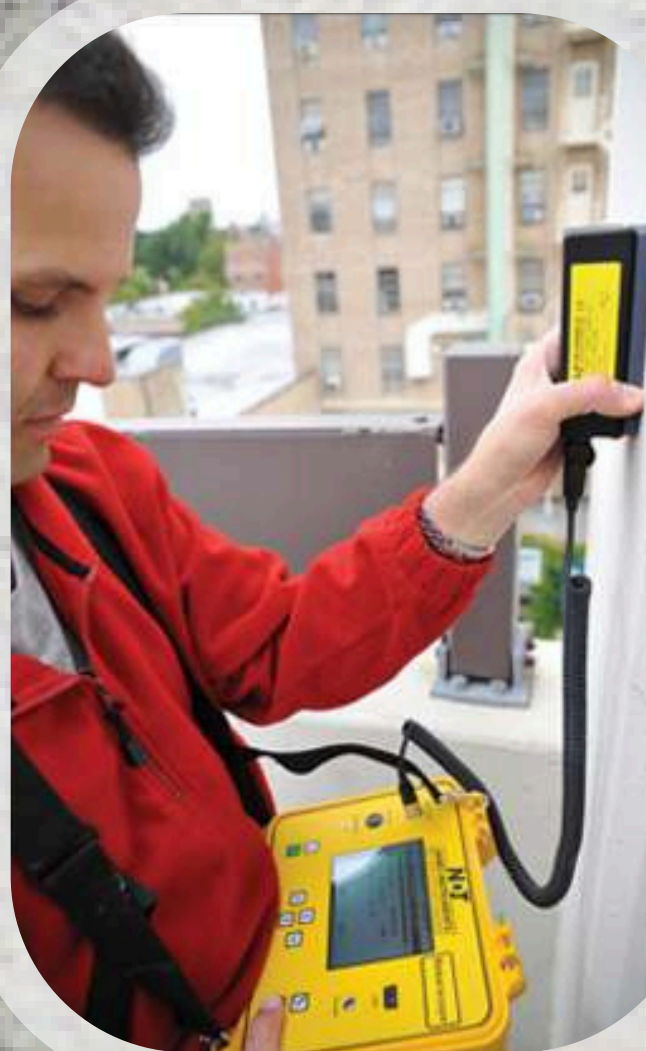


## Pullqit™ Anchor Test System

For the tensile strength of fixing, fasteners and anchors embedded in concrete and other construction materials.

**P-C-8200** - Pullqit™ Anchor Test System

# REBAR LOCATORS



## Rebarscope®

Advanced System for Rebar Location and Bar Size Determination. Also, capable of locating non ferrous metals as well such as copper, aluminium, some stainless steels, wire, and more.

**R-C-410** - Rebarscope® Complete System includes Scan Cart and Rebarlinx™ Software.

**R-C-400** - Rebarscope® Basic System



## Mini R-Meter™

Economic System for Rebar Location

**R-HR-8100** - Mini R-Meter™ Complete System with PC Software

**R-HR-8000** - Mini R-Meter™ Basic System



## ULTRASONIC TESTING

### V-Meter MK IV™

Ultrasonic Pulse Velocity System  
For Finding Voids and Cracks,  
and Determining Other Material  
Properties

**V-C-400** - V-Meter MK IV™  
Complete System

**V-C-401** - V-Meter MK IV™  
System w/o Software, include  
two 54KHz transducers



### Vu-Con® System

Impact Echo System  
For Field Evaluation of  
Concrete Structures and  
Concrete Thickness  
Determination.

**V-V-100** - Vu-Con®  
Complete System



### Emodometer®

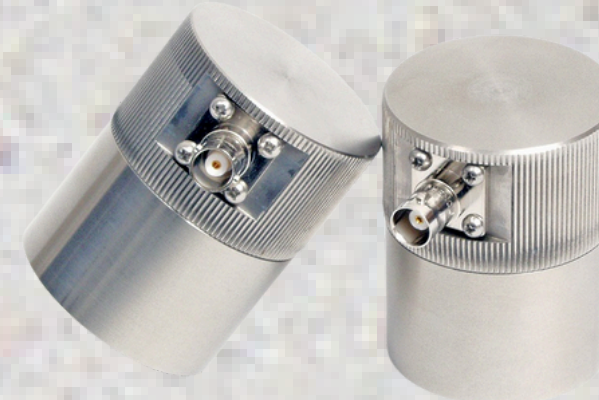
For Resonant Frequency Testing Determining Young's  
Modulus(E) and Poisson's Ratio.

**V-E-400** - Emodometer®  
Complete System



### Transducers

A complete line of low  
frequency transducers  
are available for every  
need.



## MOISTURE TESTING



### Aggrameter®

For instantaneous determination  
of the moisture content of sand,  
fine aggregate and coarse  
aggregate using a unique  
microwave sensor

**T-T-100** - Aggrameter®  
Complete System

### Aquameter™

Moisture Meter for Concrete,  
Brick, Masonry, Wood  
and Other Construction  
Materials

**T-M-170** - Aquameter™  
Complete System



### Cementometer™

Hand Held Microwave Moisture  
Meter For Water/Cement Ratios  
of Fresh Concrete

**T-C-20** - Cementometer™ Type L  
Complete for water/cement ratios.



### Aquaprobe™

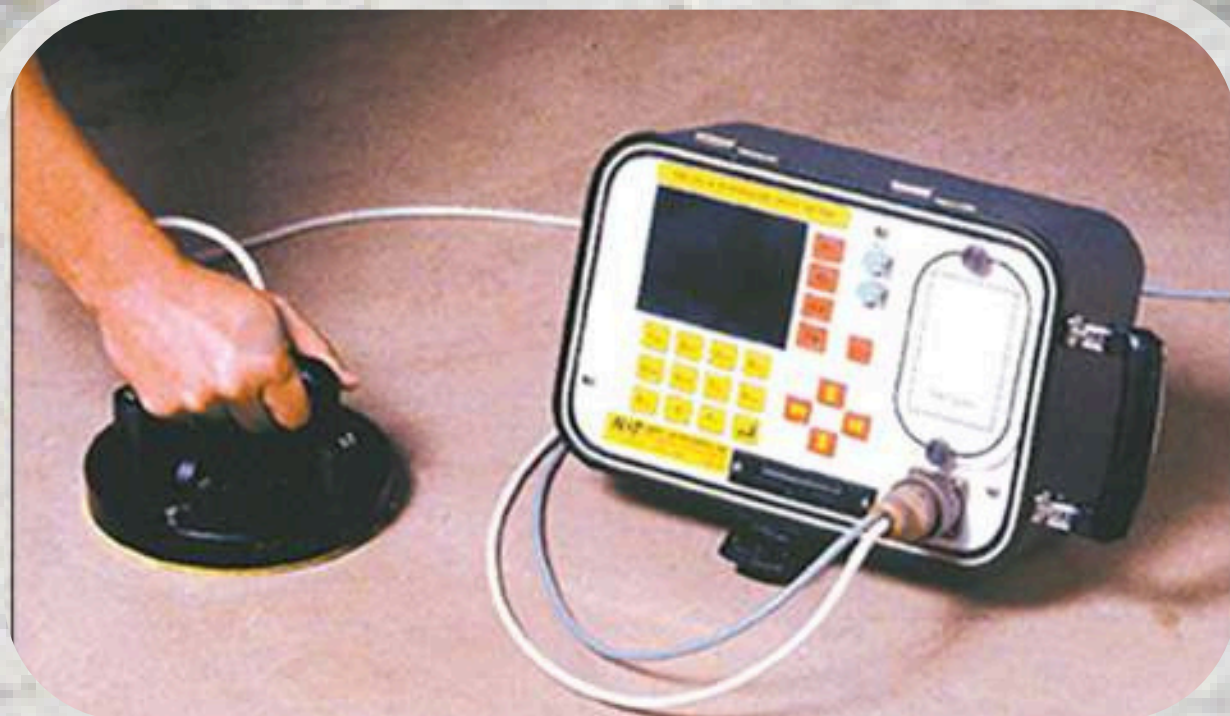
Advanced Microwave Soil Moisture Meter  
For Professional Use

**T-S-30** - Aquaprobe™  
Soil Moisture Meter  
Complete System

**T-S-35** - Aquaprobe™  
Soil Moisture Meter  
Basic System



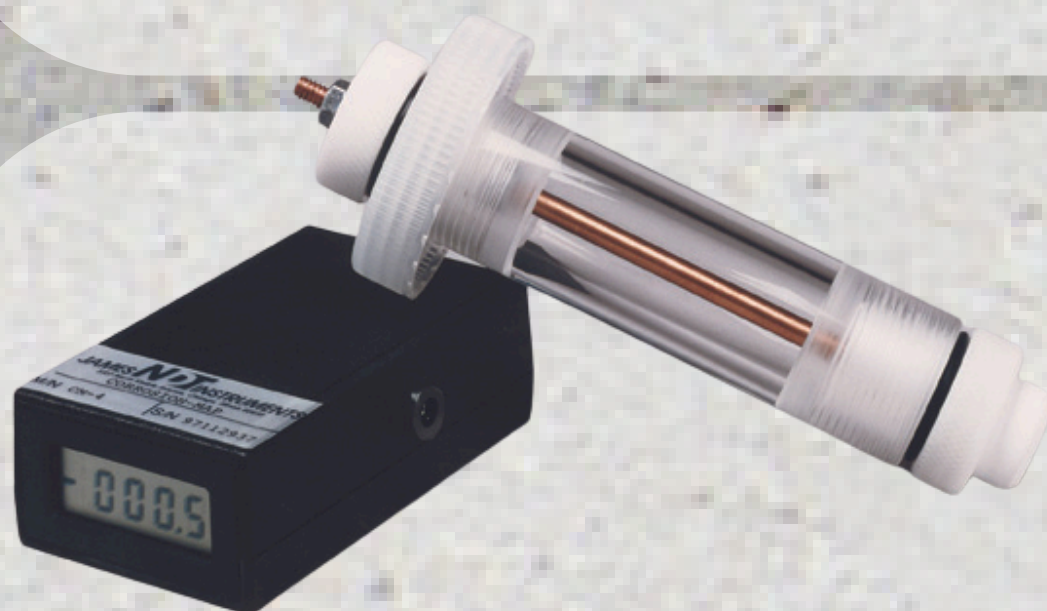
# CORROSION TESTING



## Gecor 8™

Advanced Rebar Corrosion Rate Determination System

**C-CS-8300** - Gecor 8™ Complete System



## Cor-Map® & Cor-Map® II Ohmcorr™

Concrete Half-Cell Potential Systems for Locating Areas of Rebar Corrosion. Cor-Map® II includes digital mapping feature and PC Software. Ohmcorr is a concrete resistivity system used in conjunction with the Cor-Map® and Cor-Map® II.

**C-CM-5000** - Cor-Map® II Complete System for Half-Cell Potential

**C-CM-4000** - Cor-Map® Complete System for Half-Cell Potential

**C-RM-8000** - Ohmcorr™ Resistivity system



## Poroscope™

Determines Air and Water Permeability in Concrete Both At and Below the Surface

**C-P-6050** - Poroscope™ Complete System (plugs not included)

**C-P-6060** - Pack of 25 Test Plugs



## ASR-Detect™ , Carbo Detect™

Chemical Indicator System for testing for ASR and Carbonation.

**I-AS-3000** - ASR-Detect™ Complete System

**I-CB-6000** - Carbo Detect™ Complete System



## Chlorimeter™

Determines Chloride Concentrations of Concrete and Other Construction Material Samples in the Field

**C-CL-3000** - Chlorimeter™ Complete System (does not include extraction liquids)

**C-CL-2012** - Pack of 12 extraction liquids

**C-CL-2096** - Pack of 100 Jars of extraction liquids

## James Air Meters for Fresh Concrete

ASTM Type B and other Air Meters available



**A-AB-1200** - ASTM Type B Air Meter

James Instruments Inc. specializes in Non-Destructive Testing equipment for concrete and other construction materials. Central to the improvement of the construction infrastructure are tools that evaluate the condition of the existing construction. Destructive and Non-Destructive Testing (NDT) techniques are applied. Destructive tests can provide direct information, but are relatively expensive, time-consuming, and cause damage to the structure. Destructive tests results often cannot be evaluated using statistical approaches because the number of locations in the structure that can be tested without damage to the structure is limited. On the other hand, Non-Destructive Testing (NDT) techniques are relatively inexpensive to apply, and they can detect, localize, and characterize flaws and damage in concrete, wood, and other construction materials structure without leaving any undesirable discontinuities or causing damage to concrete members.

[www.NDTjames.com](http://www.NDTjames.com)

email: [info@NDTjames.com](mailto:info@NDTjames.com)

800 -426-6500 \* 771-463-6565

3727 N. Kedzie Chicago, IL 60618



Copyright 2025

